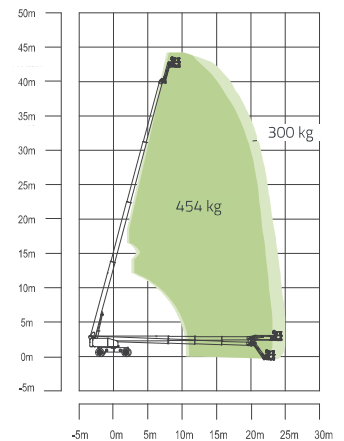


TELESCOPIC BOOM LIFTS

ZT42J

Comply with CE/ANSI/GB Standard

| Model | ZT42J |
|--|----------------------------------|
| Size | |
| Work Height | 44.08 m |
| Platform Height | 42.08 m |
| Horizontal Outreach | 25 m |
| A - Stowed Length | 13 m |
| B - Stowed Width | 2.49 m |
| C - Stowed Height | 3 m |
| D - Platform Length | 2.44 m |
| E - Platform Width | 0.91 m |
| Jib Length | 2.44 m |
| F - Wheelbase | 3.81 m |
| Tread | 2.49m / 3.87m |
| G - Ground Clearance | 0.41 m |
| Performance | |
| Platform capacity (Unrestricted / Restricted) | 300kg / 454kg |
| Drive Speed (Working) | 5 km/h |
| Gradeability | 45% (24°) |
| Turning Radius (Inside) | 7.7m / 3.3m |
| Turning Radius (Outside) | 10.8m / 8.2m |
| Turret Swing | 360° continuous |
| Platform Rotation | ±90° |
| Tail Swing | 1.68 m |
| Jib (Range of Articulation) | 130° (-55° ~ 75°) |
| Max. Wind Speed | 12.5 m/s |
| Power | |
| Engine | Cummins QSF2.8 54kW/2400rpm |
| Fuel Tank Capacity | 200 l |
| Control Voltage | 12V DC |
| Hydraulic System Capacity | 250 l |
| Drive Mode | 4WD |
| Steering Mode | Four wheels / Front wheel / Crab |
| Tire | |
| Type | IN445/50 D710 Foam-filled tires |
| Weight | |
| Gross | 21900 kg |



Range of Motion ZT42J